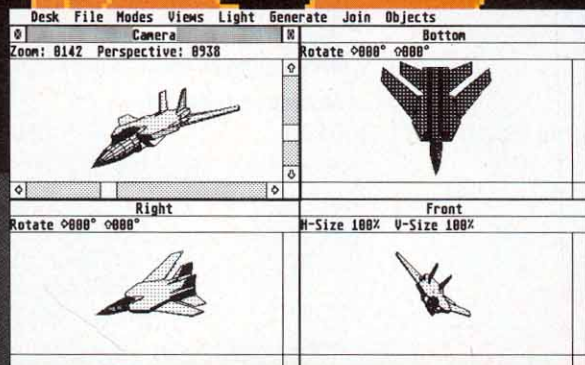


THE CATALOG™

QUALITY ST SOFTWARE



**BEST
SELLER**

The author of *DEGAS™* enters a new dimension.

Tom Hudson's CAD-3D™

A full, three-dimensional modeling station for your ST. Solid modeling, with shading from three adjustable light sources, plus wireframe and hidden surface dimensional sculpting—you name it. All your 3-D graphics fantasies have been poured into the power and speed of the ST's 68000. So step on the gas and take off!

From starships to solar systems, skyscrapers to your front stoop. Create and animate views of your own 3-D objects. And no keyboarding here—CAD-3D is entirely GEM-based. It's got to be seen to be believed.

DESIGNERS: You now have power at your fingertips that was previously available only on systems costing \$30,000 or more. *Visualize ideas instantly*—speeds up design process.

DOODLERS: Easy to learn, easy to use. *Create the ultimate in dimensional scenes.* Then detail them with any ST paint program.

CAD-3D features include:

- Works with monochrome or color monitor. Monochrome mode gives 16 levels of shading, color gives choice of 1 color/14 shades or 2 colors/7 shades each.
- View objects in see-thru or hidden wireframe form or *solid form with true light shading*. Change object form with one mouse click.
- Three independent user-defined light sources plus ambient lighting.
- Built-in 3D primitives (cubes, spheres, toroids, wedges).

continued on next page

- Automatic JOINER** creates more complex objects:
 - ADD objects together
 - SUBTRACT one object from another
 - AND objects (retains only the intersection)
 - STAMP one object on another
- Create radially symmetrical objects or expand 2D shapes into 3D shapes with one mouse click.
- Animation capability**—"record" view sequences for viewing with separate display program (included).

- Spin and Extrude functions allow even the novice 3D experimenter to create a wide variety of beautiful shapes (includes 'Snap To' grid).
- Independent scaling and rotation of objects or groups of objects.
- "Camera View" includes zoom lens and variable perspective.
- GEM user interface allows use of four views at once, or one large view. Four-view mode is user-definable.
- Save completed images in DEGAS, Neochrome or COLR Object Editor format.

- Print your objects with a graphics printer.
- Detailed illustrated user manual.
- Sample complex objects included, featuring Ian Chadwick's *STONEHENGE* (circa 1100 BC).

**Requires TOS in ROM
ST0214**

\$49.95

DEGAS™ Batteries Included

INCREASE YOUR DESIGNING POWER WITH CAD-3D ACCESSORY DISKS!

FONTS, PRIMITIVES, HINTS AND TIPS:

NEW!



- Create logos, signs, 3D letterheads and more with 3D fonts. Includes upper and lower case alphabet, numbers, and symbols.
- Useful 3D 'primitives'—these building blocks speed up the design of large-scale models.
- Sample models and a file of Tom Hudson and Ian Chadwick's hints and tips on how to make complete digital scenes with CAD-3D.

**AVAILABLE OCTOBER 1ST
ST0224**

\$24.95

See pg. ST-16 for Tom's CAD-3D Collection I. Only **\$12.00!**

PLOTTER AND PRINTER DRIVERS:

NEW!



- Plot your 3D drawings on a high-resolution pen plotter for a truly professional look! Supports Hewlett-Packard (and HP compatible) plotters. Also includes custom printer drivers for all popular dot-matrix printers.

**AVAILABLE OCTOBER 1ST
ST0225**

\$24.95

A Full Function Relational DataBase

REGENT BASE™

NEW!



by Regent Software

You don't need to be a dBase III programmer to use this database. Perfect for the small business owner or for personal productivity and it's GEM-based.

REGENT BASE's procedural language makes it a natural for handling any small business need. Modules are available for Invoicing, Accounts Receivable, Checkbook Balancing, General Ledger, and more.

This relational data base is written specifically for the Atari ST. Don't settle for simple clones of IBM products. **REGENT BASE** is easy to use and state-of-the-art!

Unique to **REGENT BASE** is the use of B+Tree Indexes. Multiple fields within a **REGENT BASE** table may be indexed for quicker access. Use the Bridge program to move and merge other database information. Sort, file, mail-merge, select up-graded word processing functions, unlimited records and indexes per table.

REGENT BASE runs efficiently on hard or floppy drive systems and supports 15 printer types.

**Recommended—
1 Megabyte RAM**

TH9003

\$99.95

TOLL
FREE



Credit card holders, call toll-free, 24 hours-a-day



800-443-0100, ext. 133 (Continental U.S. and Hawaii)



ORDERS
ONLY!

Pure telecommunications
power...Realized.



FLASH™

Version 1.1

by Joe Chiazzese and Alan Page

**"FLASH is my
#1 choice on the
Atari ST."**

— Ron Luks,
Founder of
CompuServe's
SIG*Atari and
Atari Developers
Forum.



**FREE! Try FLASH now
and get \$15.00 of
CompuServe
access time, FREE.**

**Order now and
you'll receive a
CompuServe Intro-
Pak; your free
introductory sub-
scription to the
CompuServe Infor-
mation Service
with a 46-page
CompuServe mini-
manual. Plus
\$15.00 worth of
CompuServe
access time, free.**

**This offer is valid
for everybody,
including current
CompuServe
subscribers.**

Want to take telecommu-
nications to the
outer limits of your
imagination? All you
need is **FLASH** and a
modem to get you there. We wanted
the *ultimate* in telecommunications for
the Atari ST. And it had to be affordable.

**We couldn't wait. We built it.
...Plus, it's GEM-powered.**

Now you can have the automation fea-
tures and VT100 terminal emulation of
Crosstalk™ on the IBM and the intuitive
mouse/window interface of Smart-
com™ on the Mac. Plus, the built-in GEM-
based word processor is integrated with
the capture buffer—to give you a scroll-
able, editable history of every online
session.

You can have all of it *now*, for under \$40.
Plus, we'll give you \$15 of CompuServe
connect time **FREE!** (Effectively bring-
ing the cost of the software down to
under \$25!)

FLASH features include:

- Built-in GEM mini *word processor* (features block move, undo, search, merge files, and more)
- Review your online session. Scroll through it at high speed—edit it, print it, transmit all or part of it, save all or part of it to disk. Huge capture buffer automatically adjusts to fill available RAM.

- Create "script" files that automate any operation—log-ons, file transfers, "broadcasting," email collection, etc. (69 powerful commands)
- Execute a complete online session with *one* mouse-click from the desktop.
- ANSI VT100 and VT52 cursor and keypad editing emulation (full 24 line × 80 character smooth scrolling display).
- CompuServe Vidtext high-resolution graphics terminal emulation. Save Vidtext graphics as DEGAS files and use them as *clip art!*
- Supports Xmodem (CRC & Checksum), DC2/DC4, and ASCII TEXT file transfer protocols.
- Ultra-reliable. **FLASH** features *bullet-proof* file transfers to and from CompuServe (and other packet-network online services) at speeds up to 9600 baud.
- Extensive DOS functions at your fingertips. Two clocks: built-in real-time system clock and elapsed timer.
- Unlimited banks of twenty program-
mable function keys, which can be
linked to script programs on disk.
- Translation tables can independently
filter any incoming or outgoing char-
acters.
- Detailed 50-page user manual by Ian
Chadwick, including complete refer-
ence guide.

ST0220
Crosstalk™ Microstuf

\$39.95
Smartcom™ Hayes

FREE OFFER! Here's what you have
access to on CompuServe as soon as
you receive your copy of **FLASH:**

- **ATARI 16-BIT FORUM:** The best ST
PD software, support, and gossip.
- **ATARI DEVELOPERS FORUM:**
Official Atari support, and talk of the
trade.

■ **ANTIC ONLINE:** Hot news, special
articles never released in print.

■ **VIDTEX GRAPHICS:** Hundreds of
pictures. Everything from Hollywood
stars to the FBI's most wanted. Outra-
geous stuff—the *ultimate clip art library!*

KERMIT SERVER & REMOTE CONTROL ACCESSORY

NEW!

Adds the Kermit file transfer protocol
to **FLASH**. Plus, you can now call your
computer from anywhere in the world
and have control over: disk directory,
send/receive Xmodem, send/receive
Kermit, Kermit server, and upload/
download text files. Your system is

secured with real password protection.
Perfect for sales, business, and school.
Now you can use your ST from your
office or while you're on the road.

AVAILABLE OCTOBER 1ST

ST0226
Requires FLASH

\$24.95



INTEGRATED FINANCIAL SOFTWARE FROM BATTERIES INCLUDED



THE ISGUR PORTFOLIO™



THE ISGUR PORTFOLIO is three programs in one: Portfolio manager, telecommunications, and calendar/memo pad. Receive Dow Jones stock quotes, CompuServe, The Source, and InfoGlobe financial information, automatically. Consolidate multiple stock portfolios. Hands on management of

stocks, bonds, options, commodities, mutual funds—your key to financial success.

THE ISGUR PORTFOLIO is PC magazine's "EDITOR'S Choice." The integrated GEM-based system provides intuitive access to your data and unlimited versa-

tility. A complete financial management package for the professional and individual investor.

A real value for your investment. Plus, **THE ISGUR PORTFOLIO** includes **I•STALK**. Invest in your future...today.

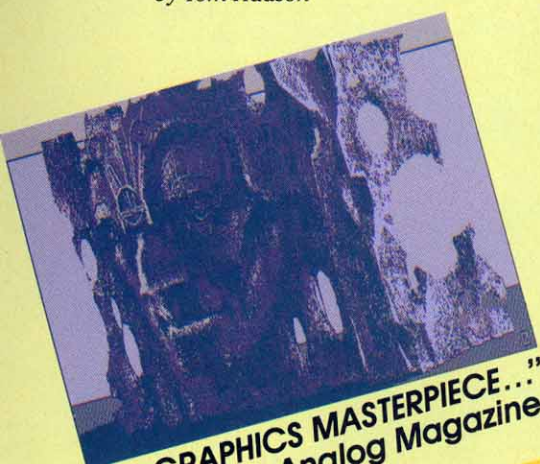
TH9009

\$199.95

D.E.G.A.S.™



by Tom Hudson



DEGAS features all the artistic tools that you may need including:

- Unique dual-screen GEM interface makes **DEGAS** intuitive and fun to use.
- Works in any resolution.
- Numerous functions to create and draw lines, rays, circles, boxes, or frames. Create perfectly straight lines or beautiful circles automatically.

PLUS ADVANCED GRAPHIC DESIGN FEATURES:

- An airbrush effect that lets you control the "paint flow."
- Automatic "Fill" function. Fill any outline instantly.
- Create "Fill" patterns.
- Instant Mirror Image, in any direction.

- Automatic Shadow or Border, you control the width and the angle.
- Zoom window lets you work with fine-detail designs.

PLUS NOW YOU CAN INTEGRATE WORDS WITH YOUR VISUALS.

- Use the Text feature to add words to your art.
- Choose the character weight and size from various fonts, or create your own with the font editor.

Now you have the power to reach the third dimension with your **DEGAS** pictures using the powerful **CAD 3-D** system on page ST-1.

TH9008

\$39.95

A spelling checker that is lightening fast!



THUNDER™

THUNDER gives you a powerful spelling checker accessible from within your favorite application program. Your accuracy will skyrocket, so the time spent proofing will plummet.

It's so simple. Here's how it works. Example: you're happily writing away and you make a "mstake" and BEEP (**THUNDER** picks up the error with

lightning-fast speed). Now **THUNDER** will display a list of similarly spelled words (stake, mistake, etc.)

Compatible with Paperclip Elite, Homepak, BTS, other Batteries Included products, 1st Word, GST-Edit, DB Master One, as well as FLASH on page ST-3, A-CALC on page ST-5, and many more GEM software titles.

TH9011

\$39.95



TIMELINK™

Take A Second For Time Management

TIMELINK is a great GEM-based scheduling and time-keeping tool for home and business. Your day, week, month and year appointments are only a mouse-click away. Useful for messages, reminders and much more. There are many incredible uses for the handy elegant, time-saving tool.

TH9010

\$49.95

TOLL FREE



Credit card holders, call toll-free, 24 hours-a-day
800-443-0100, ext. 133 (Continental U.S. and Hawaii)



ORDERS ONLY!

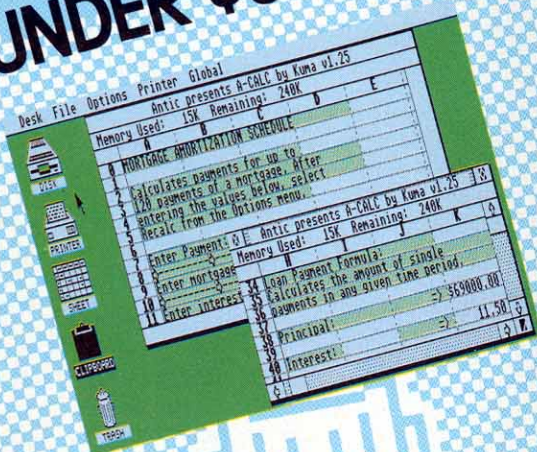
A-CALC™

by Kuma

BEST
SELLER

A FULLY GEM-BASED SPREADSHEET FOR UNDER \$60.

The first mouse-driven spreadsheet for the Atari ST computer system. A-CALC's GEM interface is exceptional. For example, load a spreadsheet simply by dragging the disk icon over the sheet icon. Imagine how easy it is to merge a file from disk by dragging the disk icon into the appropriate cell.



Version 1.50

by Kuma Systems, Ltd., U.K.

- A**-CALC's dozens of features include:
- Primarily mouse/icon driven. Keyboard or ten-key calculation entry.
 - Math functions include all standard algebraic and trigonometric functions for performing financial and statistical analysis.
 - Up to five windows can be open at once.
 - Spreadsheet capacity of 256 columns x 512 rows (128,000 cells).
 - Cells, blocks, rows, and columns can be copied, moved, saved, printed or deleted with the mouse.
 - Special WIDE-VIEW function permits half-size text display to let the user see more of the sheet at one time, in color or monochrome.
 - SEARCH for the location of any text string in the sheet. GOTO command jumps to any cell.

- Clipboard for temporary storage of block, row or column of cells which can be transferred to another spreadsheet.
- Powerful printer formatting commands. Comes with an easy-to-use GEM-based printer installation program for any parallel or serial printer. Customize your spreadsheet with the following:
 - headers/footers
 - horizontal/vertical dividers
 - selectable form feeds
 - selectable page break
 - send printer-specific control codes
 - character translation
 - loading and saving printer configuration files

- Includes on-disk spreadsheet examples.
- Worksheets are compatible with all popular word processing software. Plus, A-CALC is .DIF compatible with other spreadsheets.
- "Sparse matrix" spreadsheet design maximizes available memory. Create extra-large spreadsheets with RAM to spare.
- Cells can be protected from tampering—locally or globally.
- First-ever use of "Dynamic icons" makes operation totally intuitive.
- Includes illustrated manual.

ST0212

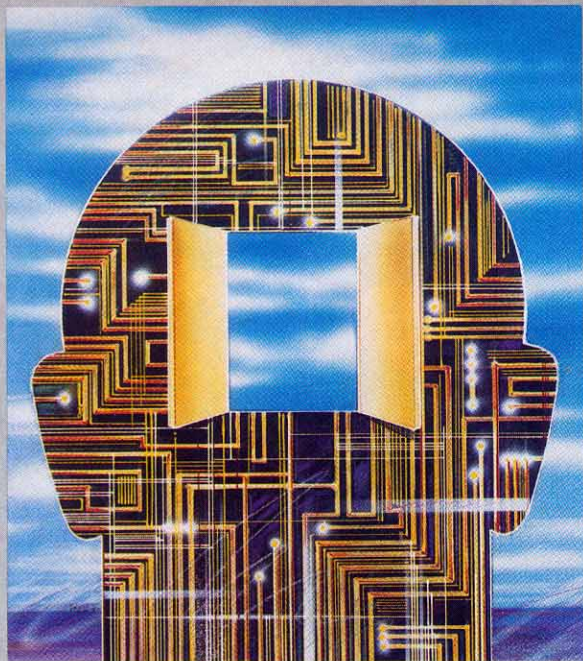
\$59.95

A-CHART, THE solution for presentation-quality graphics, will be available in early October. Check for availability with your local retailer.

ARTIFICIAL INTELLIGENCE

"That's right! Expert Systems, the artificial intelligence tool for business, industry, and problem-solving. The latest in knowledge engineering."

EXPERT OPINION™



Fifth-generation. Artificial intelligence. Now, with **EXPERT OPINION**, you can be creative in this growing new field...without having to learn a complicated language like Prolog or Lisp.

Be The First...

EXPERT OPINION is the *first* general-purpose expert system creation package for the Atari ST. Expert systems are collections of natural language rules that you create, database-style. Your "knowledge bases" can be about any subject. **EXPERT OPINION** will give you new insight and advice about your expertise. And, because **EXPERT OPINION** uses the GEM interface, the system is remarkably simple to use. Currently, expert systems are used in the fields of medicine, computer science, economics, and geology.

YOU CAN BUILD YOUR OWN KNOWLEDGE BASE WITH THE INCLUDED MANUAL AND SUGGESTED SUPPLEMENTARY READING MATERIAL.

Mainframe Power In Your ST...

Once you've built your knowledge base, **EXPERT OPINION** is easy-to-use because it's based on a powerful natural language interface, so you can give your input—and get your answers in plain English. Plus, it is the only expert system

presently available for micro-computers which can clearly explain why a particular question is being asked (it backtracks up to 10 levels).

EXPERT OPINION's "inference engine" solves problems three ways:

- DEDUCTION**—Use this mode if you have some initial data about the problem (also known as Forward Chaining).
- VERIFICATION OF A HYPOTHESIS**—Your computer asks you questions about your hypothesis (also known as Backward Chaining).
- EXPERTISE** (totally new technique)—A combination of the above, for situations where you have no initial data about the problem, and no hypothesis (Mixed Chaining Mode).

EXPERT OPINION features:

- Dictionary linked to each knowledge base.
- Unlimited number of knowledge bases.
- BaseManager has powerful tools for creating and editing knowledge bases.
- Illustrated manual includes tutorial and tips by Christopher F. Chabris, Glossary, Bibliography, and more.
- GEM-driven interface, on-line [Help], and user-friendly command structure make **EXPERT OPINION** simple to use.

FREE BONUS!

Comes with example knowledge bases on disk to get you started.

ST0219

\$99.95

WARNING: This is a sophisticated computer science tool requiring study to use it effectively. We recommend the following books to help you use the program to its fullest:

THE COGNITIVE COMPUTER, Addison Wesley 1984

EXPERT SYSTEMS, Wiley Press 1985

INTRODUCTION TO ARTIFICIAL INTELLIGENCE, Addison Wesley 1985



THE CATALOG WANTS YOU! PUBLISHING OFFER.

A New Opportunity.

*We're looking for people to create useful knowledge bases using **EXPERT OPINION**. If you're an expert on a subject (any subject), get **EXPERT OPINION**—write a knowledge base... And if it's very good, and has broad appeal, we'll publish it for you in this catalog. Write to me, Catalog Product Manager, for more details (my address is on the back page). Give me your expert opinions. I'll try to help you publish some of your knowledge bases on a commercial basis.*

TOLL
FREE



Credit card holders, call toll-free, 24 hours-a-day
800-443-0100, ext. 133 (Continental U.S. and Hawaii)



ORDERS
ONLY!

Now you can customize
MAPS AND LEGENDS
to plot any coordinates you want!

MAPS AND LEGENDS™

The Cartographer

ENHANCED VERSION 2.0



Orthographic



Mollweide



Perspective



Foucault



Flamsteed



Mercator



Polyconic

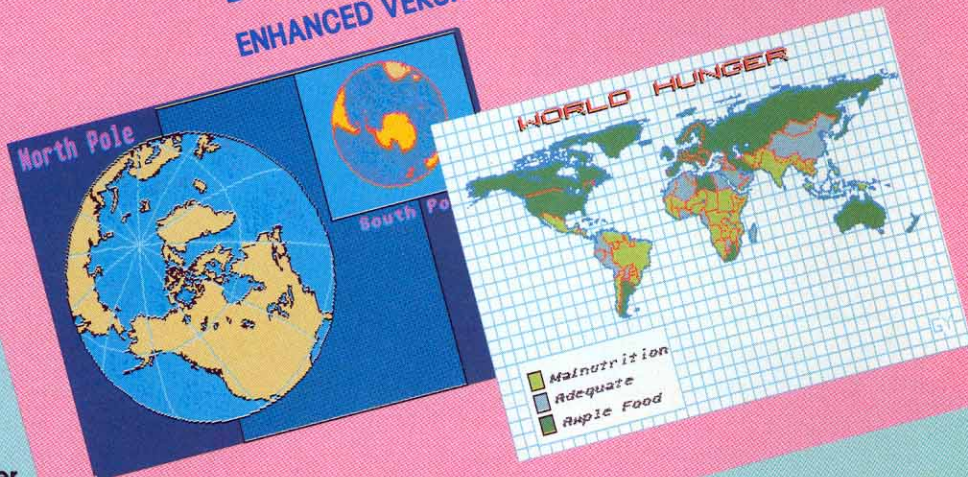


Azimuthal
Equidistant



Werner

Cylindrical



ENTIRELY GEM-BASED FEATURES INCLUDE:

- OVERLAY option for plotting your own maps, flight plans, routes, city locations, etc.
- BUILT-IN DRAWING TOOLS
 - Multiple Pattern Fills, Pen sizes, Text sizes, Fonts
- MULTI-FONT DESK ACCESSORY
 - Comes with extra fonts for customized legends
- AUTO-LOCATE MODE
 - Reads geographic coordinates from map, and distance and bearing from any point on the Earth—just by pointing with your mouse!
- DEGAS and Neo compatible. Use your maps as basic elements in the most popular ST graphics packages.
- Works with color and monochrome systems.
- Built-in topic-based [Help] system.

NOTE: With the new overlay enhancement, MAPS and LEGENDS has become one of the *best* cartographers tools in history. We added this capability to the system after a request for it from a navigational flight officer. He told us that he and the other flight officers at his base were using MAPS and LEGENDS and ST's to draw their flight plans, and that

they needed to be able to accurately plot their routes. We liked the idea so much that now anyone can build custom map databases out of simple coordinate lists. And arguably the best thing about version 2.0 is the price... still \$34.95.

ST0202

\$34.95

INTRODUCING DATAMAPS DATAMAP *NEW!* COLLECTION I:

NATIONAL POLITICAL BOUNDARIES

Europe, Latin America, S. America, Asia, Africa

PROVINCIAL AND STATE BOUNDARIES

Australia, Canada, China, U.S.S.R. (the SSR's)

HISTORICAL MAPS

Pre World War I Europe, Pre World War II Europe, Original 13 U.S. colonies, and more...

Requires Maps and Legend 2.0

ST0227

\$24.95

by Harry Koons and David Chenette

Put yourself anywhere in the world — even your own hometown. And now view that land mass from any altitude—in full perspective!

Unlimited Versatility

The *new* OVERLAY feature in version 2.0 gives you total flexibility and professional power. Now, *plot your own maps in scale on top of the built-in world map database*. Or use the new DATAMAP disks to add the boundaries of the nations of the world, historical maps, and more.

Tap Your ST's Speed...

Using advanced CAD system algorithms, MAPS and LEGENDS takes less than a minute to do what used to take hours for computers—and weeks by hand. It features ultra-fast drawing of world maps from one of 11 perspectives, three resolutions, up to 16 colors.



Exciting World War II Submarine Action
in the South Pacific!

NEW!

SILENT SERVICE™

By MicroProse

0400 hours, Tuesday, August 12, 1942... **BATTLE STATIONS!! BATTLE STATIONS!! Enemy convoy identified on radar!!**

SILENT SERVICE, The Submarine Simulation, brings exciting action, great strategy, detailed graphics and an ultra-realistic simulation of World War II U.S. submarine action in the South Pacific.

SILENT SERVICE's outstanding features include: all the critical battle stations, engine room, conning tower and ship's bridge; challenging and realistic combat versus single ships and heavily escorted convoys; and an infinite variety of situations using complete maps and charts for the entire Southwest

Pacific and a sophisticated and realistic attack plotting system.

SILENT SERVICE provides a wide selection of historic scenarios. From hit-and-run attacks to patrol missions that bring challenge and fun to both the first time player and the experienced submarine veteran.

As captain, you select a quiet patrol sector in the Marianas Islands, or choose the dangerous waters off the coast of Japan. Is the submerged daylight periscope attack best, or do you charge in on the surface at night using only radar bearings as your guide? These and many more decisions will determine your place among the elite ranks of the **SILENT SERVICE**.

TH9016

\$39.95

GET ORGANIZED AND HAVE FUN WITH MICHTRON

CORNERMAN

Eliminate the desk battlefield and make organizing easy!

What Sidekick did for the IBM, **CORNERMAN** does better for your Atari ST. This utility gives you a host of useful desk-top tools in one simple, neat package. With everything from a built-in clock, notepad, phone book and ASCII table, to a full function calculator, a cluttered desk is a thing of the past. And as a desktop accessory, **CORNERMAN** is available nearly anywhere within GEM.

CORNERMAN doesn't interfere with other programs and comes complete with security. **HIRE THE PERFECT RIGHT HAND PERSON TODAY—HIRE CORNERMAN.**

One megabyte RAM recommended.

TH9013

\$49.95

NEW!

TIME BANDIT

Now you're organized—so take a break and have some fun.



CARDS

CARD games for the entire family and serious strategy card player. Beat the dealer in Blackjack, skunk your opponent in Cribbage, play out the aces in Solitaire and win at Klondike and Poker Squares. Incredible graphics.

TH9015

\$39.95

TH9014

\$39.95



MichTron



TOLL FREE



Credit card holders, call toll-free, 24 hours-a-day



800-443-0100, ext. 133 (Continental U.S. and Hawaii)



ORDERS ONLY!

RED ALERT™

Written by Stanley Crane and Daniel Matejka

But you have some options. A few. Strategically-placed Ground-Based Lasers and Antibalistic Missile Silos are the backbone of your defense. Your last space-based Particle Beam Weapon is available, but you must allocate your resources wisely to use it.

Your cities are under attack. It's up to you to try and destroy the Russian ICBM's and MIRV's—plus the missiles launched from nuclear subs. RED ALERT features real-time animation, on-screen help, auto-demo mode, color/monochrome compatibility, three selectable levels of play, PLUS a unique construction set which lets you customize North America with the cities that you want to protect, and the positions of the Ground-Based Lasers and Antibalistic Missile Silos.

ST0223

\$24.95

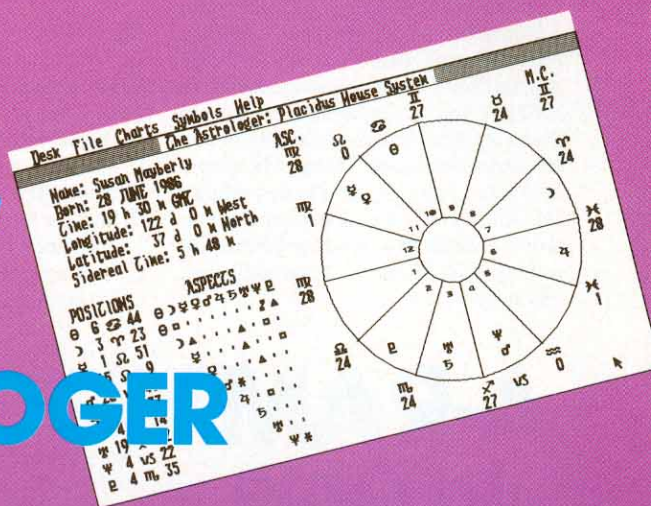
The Perfect Addition To Your Family Album!

STAR STRUCK™ —THE ASTROLOGER

By Harry Koons

Now your ST can *instantly* generate accurate natal charts for you, your family, and friends—the way an astrologer would do it. Entirely GEM-based, STAR STRUCK creates charts using formulas for the nine most popular house systems used throughout history (Placidus, Morinus, Equal Spaced, Porphyry, and five more). On-screen help windows and reference documentation show you exactly what all of the astrological icons mean.

NOTE: RED ALERT is an addicting game, but it's also a thought-provoking version of an SDI (Strategic Defense Initiative) nightmare scenario. (RED ALERT was developed by the authors of DB Master.)



Excellent Graphics, Custom Fonts...

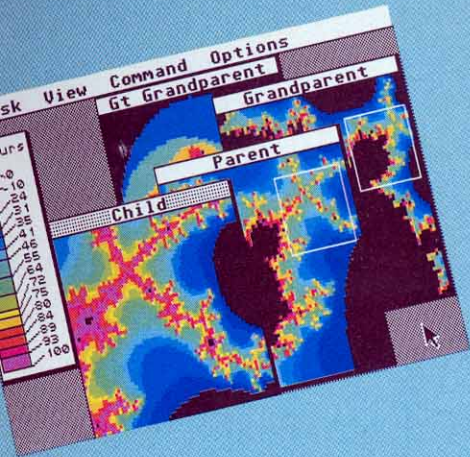
STAR STRUCK includes the Font Loader desk accessory and fonts (gothic, roman, etc.) to give your charts that authentic look. All astrological aspects are displayed in graphic form. U.S. and world maps are built into the program. Locate your birthplace with the mouse or key-in the exact coordinates. Charts can be printed out or saved to disk in DEGAS format. Compatible with color and monochrome monitors.

ST0222

\$24.95

GSTC APPLICATION FOUNDATION I FRACTAL FACTORY™

NEW!



Discover how to do graphics programming! Learn how to write a GEM application! Learn by example with the source code for FRACTAL FACTORY. This remarkable disk contains *all* the source code, batch files, linker files, and graphics and math libraries for a unique graphics application written by the GST in-house programmers. FRACTAL FACTORY is the ultimate fractal-maker, using multiple windows, variable zoom, and con-

touring to display many generations of dazzling fractals at once. Monochrome and Color versions illustrate how to write GEM graphics applications for both types of monitors. The FRACTAL FACTORY source code can be the *foundation* for almost any type of GEM application written in GSTC.

ST0228

\$19.95

**Sixty Eight K Assembler, Editor, Debugger combo
for under \$35.00!**

A-SEKA™ by Kuma

Version 1.6

By Andelos Systems/Kuma, UK

Sometimes you just need to get that code running faster. A high-level language application needs a burst of energy. Or maybe it's arcade action—high end stuff. A-SEKA does it *fast*, because it is all in RAM. All of it: The Assembler, Editor and Monitor/Debugger. Those who know how can create exciting codes mighty fast. And if you're learning Assembly, you won't ever have to wait for your latest attempt to go through the assemble and link process.

A-SEKA assembles source codes at over 30,000 lines per minute! And since it can assemble and link simultaneously, you can *run your code instantly*. Of course, A-SEKA is also a macro assembler and uses standard Motorola mnemonics. But what really sets it apart is its powerful machine language monitor, disassembler and symbolic debugger.

FEATURES:

- Symbol table access.
- Arithmetic operations. Input in any base.
- Disassembles 16 lines at a time.
- Motorola mnemonics.
- Single step. Trace.
- Multiple breakpoints. Memory inspect and modify.
- Line assembler.
- Examine registers.

VERSION 1.6

ENHANCEMENTS:

- Full-screen editor, including cut & paste
- Expanded GEM AES and VDI libraries
- Compatibility with other assembler source code
- Support for GEM subdirectories, additional pseudo-op's for printer and Line A control
- Step command now skips trap and Line A OS calls

ST0216

\$34.95

NOTE: We're carrying both the SEKA and GST-ASM assemblers because they are complimentary—each is designed to meet the needs of a different type of programming. SEKA is a low-level assembler that is most useful for programmers who like to work entirely at the machine level or want ultra-fast response time. GST-ASM is really a professional developers tool—its extra GEM features and GEM environment make it the perfect assembler to use with any high-level language.

A-RAM™ by Kuma

By Roddy Pratt, UK

Can your RAMdisk partition any size disk emulator you want?

- A-RAM can.
- Can it work with TOS in ROM?
- A-RAM can.
- Can your RAMdisk accelerate your floppy write speed by turning off the verify mode?
- A-RAM can.
- Can you have multiple RAMdisks present at the same time?
- You guessed it. A-RAM can.

A RAMdisk is an area of memory set aside as a buffer that responds to most of the available disk commands—only much faster. Everybody needs a great RAMdisk, and A-RAM is powerful, simple and flexible enough for *every* application.

ST0215

\$19.95

TOLL
FREE



Credit card holders, call toll-free, 24 hours-a-day
800-443-0100, ext. 133 (Continental U.S. and Hawaii)



ORDERS
ONLY!

GSTC™ Compiler

Version 1.3

Here is the compiler that 1ST WORD was written in.

Do you want to write GEM-based programs for the Atari ST? With GSTC you can—without spending hundreds of dollars on expensive compilers. Now you can add windows, dialogs, and all the GEM forms to any program — it's easy with GSTC. Use your mouse and pull-down menus to write C programs within a desktop menu-driven "shell" environment. GSTC allows compile-assemble-link and assemble-link operations to be batched, avoiding tedious and error-prone command line entry. And it all fits on one single-sided disk. No excessive disk swaps.

At the heart of the GSTC package is the remarkable *GEM Superstructure Library*. This enables the beginner to write GEM applications software at once, without the complex learning curve associated with GEM AES and VDI. Open a fully-functioning window with one call. GSTC is fast—providing compile and linkage turn-around times speedy enough for the most impatient hacker!

GSTC features include:

- GEM Text Editor (GST EDIT)
- Linker (GST LINK)
- C Compiler
- GEM "shell"
- 68000 Assembler
- GEM Superstructure Library
- GEM bindings. (Standard Unix, GEM VDI, GEM AES, GEM XBIOS, TOS)
- Comprehensive printed user manual

Version 1.3 enhancements

- All 40 GEM XBIOS routines, with documentation

- All 12 GEM BIOS routines, with documentation
- Hints and Tips on using pointers to simulate structures
- FRACTAL FACTORY object code

TH9018

\$79.95

NOTE: We searched all over the world to find the best introductory C compiler. When we discovered that GSTC was used to write 1ST WORD, we decided that it was just what we were looking for. This compiler is very powerful and remarkably easy to use. But at present, it doesn't have structures or a floating point library. To help you here, our version 1.3 of the GSTC documentation includes information about how to simulate structures with pointers, and the FRACTAL FACTORY disk has a math library on it. If you're writing a program that uses very serious math, you may need to look at Lattice C. But for most applications, GSTC will do the job.

GST-ASM™

A high-level Macro Assembler with an unbeatable combination of price, performance, and features.

Elegance and sophistication...
GST-ASM

GST-ASM is a Motorola-compatible 68000 macro assembler designed to work with high-level languages (C, Pascal, Fortran, etc.). Now, assembly language programming is truly accessible to all ST users. And because GST-ASM uses the GST GEM interface and text editor, it's a joy for beginner and advanced programmers alike.

Includes Macro Tools and more!

GST-ASM has high-powered macro facilities, for extremely fast throughput. Plus,

extended macro functions include several 'pseudo-functions' such as .LEN and .INSTR (which can be used in string substitutions). A large toolkit of useful macros is included for conditionals, loops, stack handling, and subroutines.

GST-ASM features include:

- GEM text editor (GST EDIT)
- GEM "shell" operating environment
- Unique, high level instruction macro library (IF, WHILE, REPEAT, CASE, etc.)
- Supports conditional assembly
- Creates cross-reference listings
- Symbol table
- Supports Include files
- Generates relocatable code
- Produces object code compatible with: Lattice C, Pascal, Fortran, Modula 2, etc.
- Comprehensive printed user manual, including thorough documentation of all assembler error messages.

TH9017

\$59.95

FREE WITH GSTC & GST-ASM! GST EDIT and GST LINK

GST-EDIT is a GEM-based screen editor that is to programming, what 1ST WORD is to word processing. Features up to four independent windows, cut & paste, search & replace, plus is 100% integrated with GSTC and GST-ASM.

GST-LINK is the same linker that comes with Lattice C. It is an extremely flexible linker that is relocatable, supports SID symbols, symbol tables, link maps, batch control files, and more.

The standard for the 68000.

LATTICE C™

By Metacomco

- Full Kernighan and Ritchie implementation
- Powerful data types (pointers, arrays, structures, unions)
- Separate and conditional compilation
- Macros
- LATTICE design
- True native code compiler
- Comprehensive error handling, including warning messages
- Full floating point arithmetic
- Optimized to produce fast, compact code
- No runtime licenses required
- All C language features are supported, including:

PRE-PROCESSOR COMMANDS: #include, #define, #undef, #if, #ifdef, #ifndef, #else, #endif, #line.

STORAGE CLASSES: extern, static, auto, register, typedef.

TYPE DECLARATORS: int, char, short, unsigned, long, float, double, struct, union.

OBJECT MODIFIERS: *, [], (). Declarations may be arbitrarily complex.

INITIALIZERS: Full range of expressions accepted.

STATEMENT TYPES: All are supported, including labels and goto.

- LINK 68 and GST LINK compatibility.

GEM Libraries

- Complete interface to GEM VDI and AES functions and to library of Unix and utility functions, allowing all the features of the Atari ST—icons, windows, graphics, etc.—to be used. The graphics libraries are also included in source code form.
- 270-page manual

EDITOR LINKER MENU+

TH9007 **\$149.95**

MCC PASCAL™

By Metacomco

ISO Pascal Compiler

This Pascal compiler has been widely used on the Commodore Amiga and the Sinclair QL. It is a fast and powerful implementation that conforms *fully* to the exacting ISO 7185 standard. **MCC PASCAL** is the ideal Pascal for all users, whether new to Pascal or experienced programmers.

- FAST, SINGLE-PASS COMPILATION.** **MCC PASCAL** compilation is straightforward and fast—ideal in education or program development.
- COMPATIBLE—COMPLETE IMPLEMENTATION OF ISO 7185.** Compatibility with the International Standards Organization's definition of ISO Pascal.
- 32-BIT INTEGERS AND 32-BIT IEEE FLOATING POINT.**

- COMPREHENSIVE ERROR HANDLING.** The compiler recognizes over 150 different errors, and the runtime system provides over 30 different English error messages.
- 215-PAGE MANUAL.**

EDITOR LINKER MENU+

TH9006 **\$99.95**

"For an environment that's superb for development, I vote for Metacomco."

Anita Sinclair, Magnetic Scrolls, UK
(developers of THE PAWN)

MCC MACRO ASSEMBLER

By Metacomco

FREE WITH EACH METACOMCO LANGUAGE SCREEN EDITOR, LINKER, MENU+

- EDITOR** features include: Horizontal and vertical scrolling, file merging, cut & paste, search & replace, macros.
- LINKER** features include: Relocatable, optional SID debugger symbols, auto run-time relocation.
- MENU+** is a remarkable new menu-driven GEM environment designed to


speed up your program development cycle (EDIT, COMPILE, LINK, RUN). You can now specify a number of TOOLS (for example, any editor, compiler, debugger, etc.) together with the options for each of these tools. And MENU+ remembers all the little things that you do during a programming session—so you don't have to.

The MCC MACRO ASSEMBLER is the companion assembler for Lattice C and MCC Pascal. This full-specification assembler was specifically designed to complement those languages. Features include: linker, editor, GEM libraries, macros, Menu+ and 100-page manual.


TH9005 **\$79.95**

**Technical questions?
Talk with a Metacomco
System Software
Engineer:
Call (408) 438-7201.**

✓ **RENAME** files singly or batch

 **CREATE** and **DELETE** folders

 **MOVE** files in and out of subdirectories or to other disks

 **TEXT FILE FORMAT** and **PRINT** using headers, footers, and page numbers

 **COPY** files

 **FORMAT** disks

 **DISK LABELS** printed automatically

 **DELETE** files

By Jim Thompson

These are the DOS Icons Digital Research forgot when they wrote GEM. It's too bad Atari didn't put **CRYSTAL** into the TOS ROM's, because for less than 30K of code, **CRYSTAL** gives TOS the

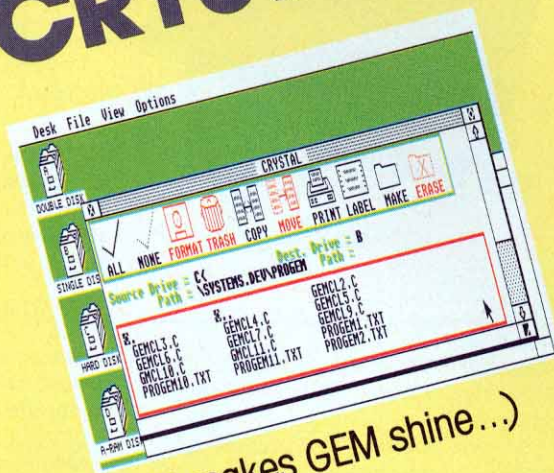
most powerful features of MS-DOS. Plus, you never lose the look and feel of GEM. And since **CRYSTAL** is a desk accessory, it's always available.

In fact, these eight icons will eliminate

NEW!

ADD A WORLD OF DOS ICONS TO ALL OF YOUR GEM PROGRAMS.

CRYSTAL™



(It makes GEM shine...)

all the frustration you feel from not having powerful DOS functions available from within your favorite GEM program (or the desktop). Of course, **CRYSTAL** is compatible with all monitors, all disk drives, and all printers. Make your personal version of GEM shine—for \$24.95.

ST0229

\$24.95

Use the language that professionals use from Prospero—the language specialist

PRO FORTRAN-77 **NEW!**

PRO FORTRAN-77 compiles up to 10,000 lines and utilizes over 1,000 identifiers. Pro Fortran-77 is a full implementation of ANSI (American National Standards Institute) Fortran 77 with no omissions and many useful extensions.

PRO FORTRAN-77 gives programmers a secure base on which to build.

Package includes: compiler, linker, runtime libraries, librarian, X-ref program, sample programs and 200 page manual.

Fortran is the most widely used language by universities, scientists and professional programmers. Take advantage of Fortran power combined with the wealth of information and subroutines that have been developed over the past 25 years. There is software for everything from particle physics to mechanical engineering.

Ideal for Atari software developers, schools and colleges, computer science students, training institutions and great for solving technical problems.

Fortran should be in every ST programmers library.

TH9012

\$149.95

TOLL FREE



Credit card holders, call toll-free, 24 hours-a-day
800-443-0100, ext. 133 (Continental U.S. and Hawaii)

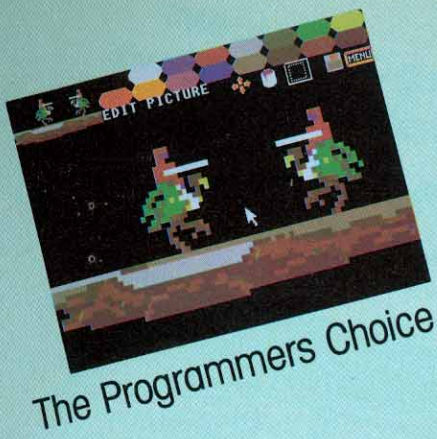


ORDERS ONLY!

A bit-map 'raster cutter' for ST program designers using the 16-color mode.

C.O.L.R. Object Editor

by The Rugby Circle



NOW, the first all purpose graphics design programming package is available for the ST. An essential time-saving tool developed for creating software sprites and bit-mapped game objects.

Your original art or favorite low-resolution picture from any ST paint program can be sketched or modified. Invert, twist or copy your objects. The zoom editing feature gives your picture that professional look. Your object is stored on disk in a compatible format allowing you to access your work from the programming language of your choice.

Store up to 20 objects in memory at once and instantly access four rainbow paint palettes from RAM.

C.O.L.R. OBJECT EDITOR includes object motion examples. This is the only graphics programming tool of its kind for the professional and hobbyist programmer.

See the November 1985 issue of **ANTIC** for more information on **C.O.L.R. OBJECT EDITOR**.

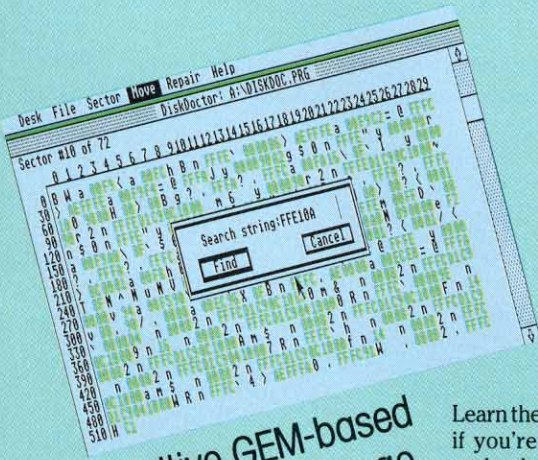
COLOR ONLY

ST0201

\$29.95

DISK DOCTOR

by Dan Matejka



Intuitive GEM-based disk utility package.

Learn the secrets of ST disk structure, and if you're adventurous, try some "disk archeology." Recover deleted files *automatically* and repair damaged files and disks.

- Make quick modifications to *any* ST single or double-sided floppy or hard disk.

- Use **DISK DOCTOR** to *customize* program menus and messages.
- Search for character strings or go to any sector instantly. Quickly edit full sectors on-screen using your mouse or cursor keys. Get directory history, file attributes, and more.

DISK DOCTOR is perfect for the casual user who just wants to repair a file, OR the *serious programmer* who wants to discover what's really going on. Includes on-disk Help and thorough technical reference information.

COLOR / MONOCHROME

ST0211

\$29.95

TOLL FREE



Credit card holders, call toll-free, 24 hours-a-day



800-443-0100, ext. 133 (Continental U.S. and Hawaii)



ORDERS ONLY!

ULTIMA II

By Sierra

ULTIMA II. One of the most popular fantasy role-playing games ever, **ULTIMA II** still claims a place on the bestselling charts. Second in the series this multiple disk epic that lets you create your own super-powered alter ego to perform brave and daring feats in your honor. Together, step through time doors to ages past, present and future. Explore the far reaches of the galaxy. Battle fierce monsters and cunning brigands. Finally, face the all-powerful

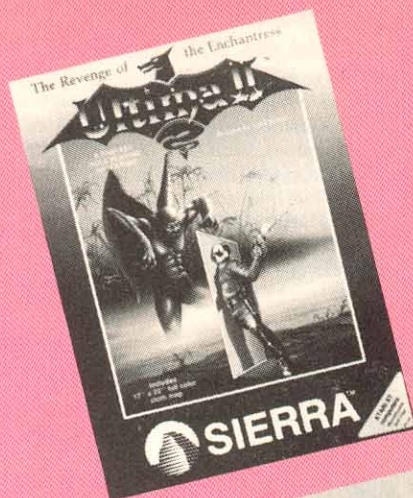
enchantress Minax, in a duel unequalled in the annals of time. A colorful cloth map helps guide the player through the Ultima universe.

Plan on spending a couple weeks unravelling the ribald adventure.

TH9002

\$59.95

A Consistent
Alter Ego
Best Seller



HARD TO FIND CABLES \$19.95

THE CATALOG has premium quality shielded cables with gold contacts.

What makes these cables so special? They have the unique non-standard Atari connectors and provide the length that can free-up your workstation of awkward peripheral arrangements.



520 ST

6' ST Micro floppy disk drive cable (SF354 and SF314 drives)

PH0003 \$19.95

6' ST to printer cable

PH0001 \$19.95

5' ST to modem cable

PH0002 \$19.95

800/XL/XE

10' Atari standard peripheral cable (Serial/SIO connector)

PH0006 \$19.95

5' 850 Interface to printer cable

PH0004 \$19.95

5' 850 Interface to modem cable

PH0005 \$19.95

HIPPOVISION VIDEO DIGITIZER

Create digitized Degas and NEO-chrome-compatible picture files using any high quality composite video input (e.g. color or b&w camera, VCR, TV, etc...). Fast software updates the ST's screen 10 times per second, while the hardware frame-grabber snaps pictures in 1/60 of a second. Animation mode allows automatic sequential frame digitization. Black and white high contrast mode or up to 16 grey levels with color monitors. 320H x 250V resolution. NTSC, PAL, and SECAM compatible. Includes hardware interface, software, demos and instructions.

In single color mode: It snaps the picture in a single video frame (1/60th of a second). No blurring of the picture occurs in this mode. Animate a sequence of pictures (up to a total of 50 pictures with a 512K machine, about 100 for a 1024K machine).

THE SPECS

- 256 x 256 x 9 bit resolution (3 bits per color).
- Standard NTSC 1 volt peak-to-peak composite sync signal.
- Software color "voting" system picks optimum 16-color ST palette according to image.



- Hardware plugs into printer port for high speed data transfer rate.

PH0007

\$139.95

Perfect for artists, game designers, and video aficionados.

S/Terminal plus SOURCE!

Get on-line and transfer files with S/Terminal, a full-featured terminal program written in 68000 assembly language. S/Terminal features Xmodem, Xon/Xoff, 300/1200/2400 baud support (and more, up to 19.2K baud), and on-line help screen. ALL SOURCE CODE IS INCLUDED, in addition to object code. This disk also includes several C source and object graphic examples, plus five LOGO demos.

PD0057

\$12.00

ST FRACTALS plus SOURCE!

Features MANDLEZOOM by Harry Koons. Uses Mandelbrot algorithm to draw fractals in GEM windows in any resolution. Then zoom in with 2x, 4x, 8x, or 16x magnification. Change fractal iteration values and rescale fractals to enhance their color. Then save your fractal picture to disk. Includes all "C" source and object files. PLUS, a half dozen other fractal programs that use different algorithms and display techniques (some also with source code).

PD0068

\$12.00

DEGAS COMPETITION HI-RES WINNERS

The top eight monochrome entries from Batteries Included's DEGAS art competition. Includes a slide-show viewing program—DEGAS is not required.

PD0076

\$12.00

CAD-3D COLLECTION I

The first collection of complex objects created by Tom Hudson with CAD-3D. Includes: MONITOR (Atari SM124 monitor), ALPHOM (Alpha when viewed from one angle, Omega when viewed from another!), STARSHIP (Starship Enterprise), SHUTTLE (Executive Space Shuttle), OUTLET (exploded view of electrical wall outlet), HELMET (16th century Japanese battle helmet), and more! (requires CAD-3D ST0214)

PD0085

\$12.00

ST BASIC/LOGO SAMPLER

BASIC: Includes MIDIREC.BAS—a simple MIDI sequencer and sample song files, BG.BAS—backgammon, Fractals in BASIC, Biorythm's, and more. LOGO: Nearly a dozen useful routines including complex graphics. Plus two bonus desk accessories.

PD0078

\$12.00

SOLID SOURCE CODE

Features Jim Luczak's VDI SAMPLER and C PRIMER, which demonstrates C programming techniques and the use of VDI functions and their C BINDINGS. BICALC, a desk accessory Binary-Hexadecimal-Decimal calculator. Plus two very fast versions of LIFE, written in Assembler. All source and object code is included and is well commented. And more!

PD0079

\$12.00

XLISP

Interested in artificial intelligence? XLISP is a version of LISP that has an object oriented extension capability. It allows you to experiment with AI algorithms and structures as well as object oriented programming. Applications written on the ST can be ported to other computers since versions of XLISP are also running under UNIX, VAX/VMS, MD-DOS, CP/M-86, CP/M-68, and Macintosh. XLISP comes with SOURCE CODE (in C) and is extensible.

PD0084

\$12.00

ST DOODLE plus SOURCE

The perfect GEM learning tool. PD paint program written in "C", including object and source files for you to explore. Works in all three resolution modes. Demonstrates GEM drop-down menus, windows, scroll bars, color selection, fill algorithm, three brush sizes. Comes with NEOVERT—converts your pictures from NEO to DOODLE format. Learn how GEM and the ST work . . . without any typing!

PD0058

\$12.00

DEGAS COMPETITION COLOR WINNERS

The top eight color entries from Batteries Included's DEGAS art competition. Includes a slide-show viewing program—DEGAS is not required.

PD0077

\$12.00

An Electronic Jewish Mother Created by a Former Playboy Cartoonist!

Written by Yakov Kirschen and Just For You, Inc.

MOM and ME

Just think. Your own computerized Jewish mother—on-screen in an overstuffed chair; knitting, cajoling, dispensing advice, and offering you encouragement—or making you feel guilty, of course. She'll speak to you by name and brag about you to your friends.

ST0204

\$19.95

monochrome/color

MURRAY and ME

Some people don't want a Jewish mother. How 'bout a Jewish uncle? The London Times called MURRAY "the first in a new generation of Biotoons"—computerized, interactive cartoon characters. MURRAY is always ready to cheer you up when you're feeling blue.

ST0203

\$19.95

monochrome/color

Special Note To ST Dealers

When it comes to Atari 16 bit products, **THE CATALOG** is the best resource available for state-of-the-art software. Every effort has been made to contact ST dealers nationwide with a copy of **THE CATALOG** that features the latest in ST products. If you were overlooked, it was not intentional, and we hope you will call us for free product information and dealer discounts. Be one of the first to stock your shelves with ST products from Antic, Batteries Included, Regent, Hippopotamus, GST, Kuma ...and the list continues.

Many of our customers call us looking for the nearest dealer of ST products. If you would like to be on our referral list please let us know. We're here to help you service the many ST owners...and the list is growing!

TOLL
FREE

Credit card holders, call toll-free, 24 hours-a-day



800-443-0100, ext. 133 (Continental U.S. and Hawaii)

ORDERS
ONLY!